



HPEC 2006: Looking Forward, Looking Back...

The Impact of Programming Difficulty on Hardware Obsolescence

Gedae, Inc.

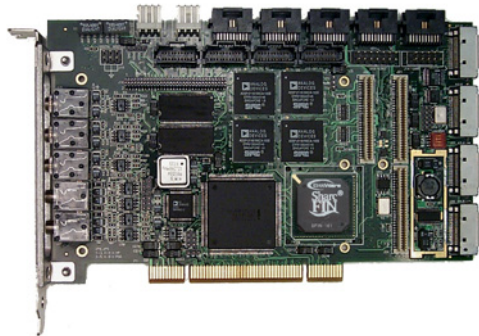
www.gedae.com

856 - 231- 4458

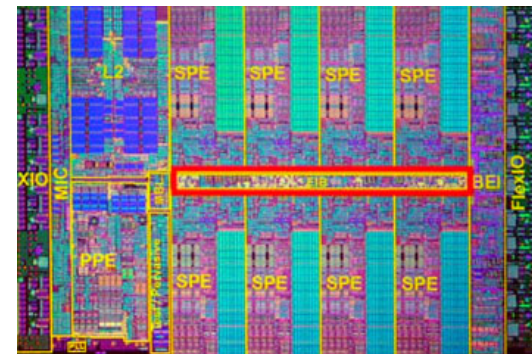
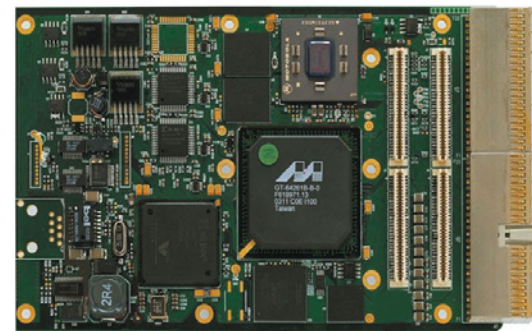
New Hardware Offers More Operations in Less Area



1990s: SHARC
DSP Boards



Now: Multicore
and FPGA



Programming Difficulty Still Swept Under the Rug



1990s: SHARC
DSP Boards

- Middleware hides DSP complexities but does not tap its full power
- Difficult to program DSP at a low level
- Long schedules
- High costs
- Difficult to maintain

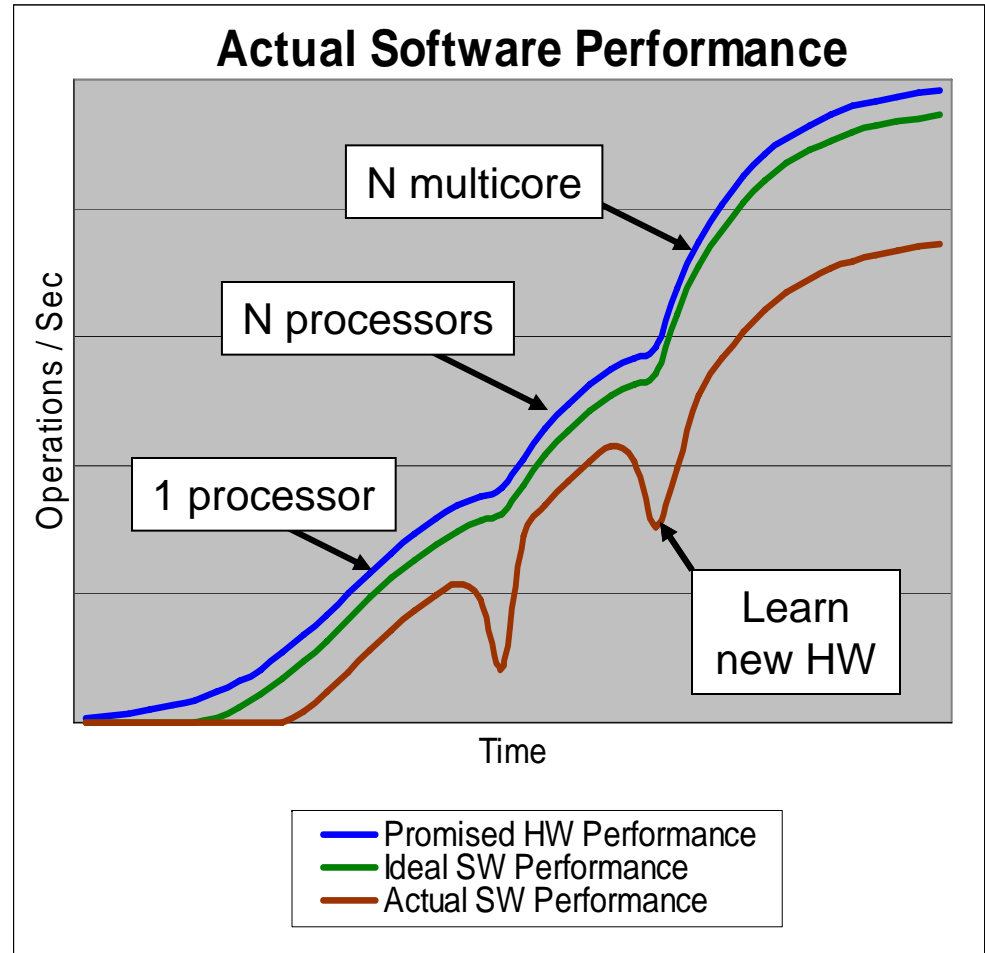
Now: Multicore
and FPGA

**Are We
Repeating
the Same
Problems?**

Programming Difficulty Affects Performance



- Each new HW technology requires relearning how to program and recoding of algorithms
- Will the promise of new hardware be fully realized if software development lags behind?



Gedae: A Model Driven Solution to SW Development



- Specification of entire application
 - From high level (mode control) to low level (vector ops)
 - From data input (A-to-D) to display (GUIs)
- Highly portable language
 - Functionality developed separately from target-specific implementation
- Quality autocoding
 - Outputs real time applications
- Implements the complete software product
 - Multiprocessor, heterogeneous