

Model Driven Architectures and UML Performance Modeling Capability – Design and Usage

Harald Pschunder and Leonard Weinberg
Lockheed Martin Maritime Systems &
Sensors, Moorestown, New Jersey

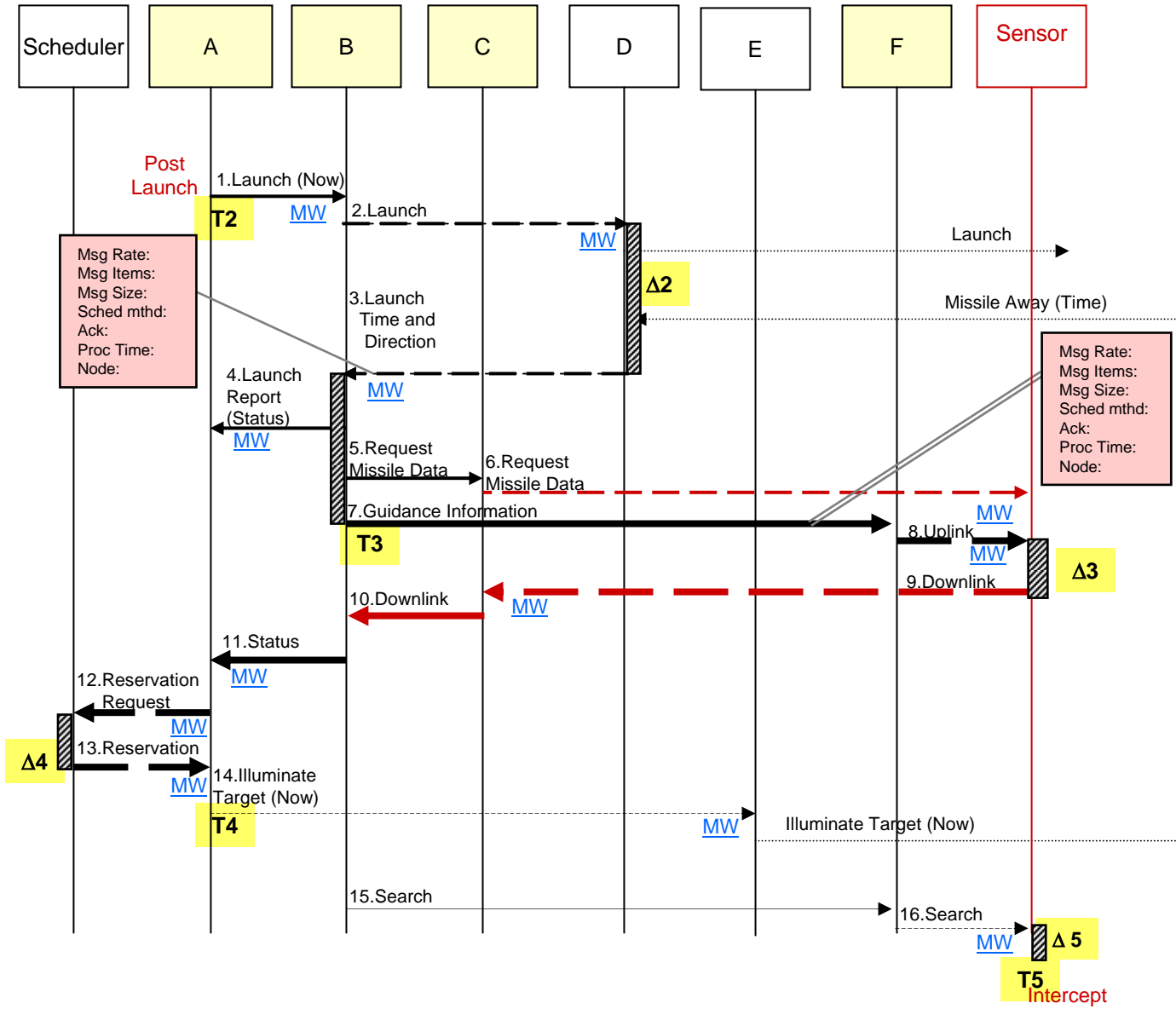
Michael Stebnisky
Lockheed Martin Advanced Technology
Laboratory, Cherry Hill, New Jersey

Presented at: HPEC 2004



September 30, 2004

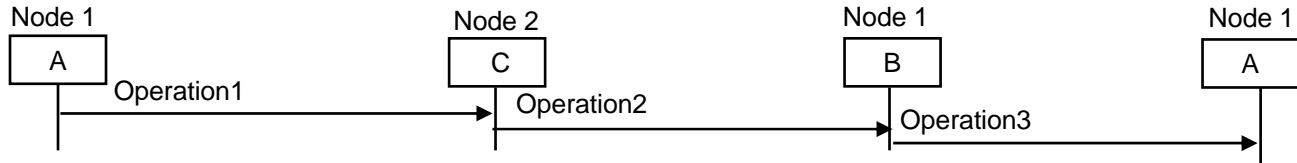
Example: UML Sequence Diagram with Added Architecture Detail



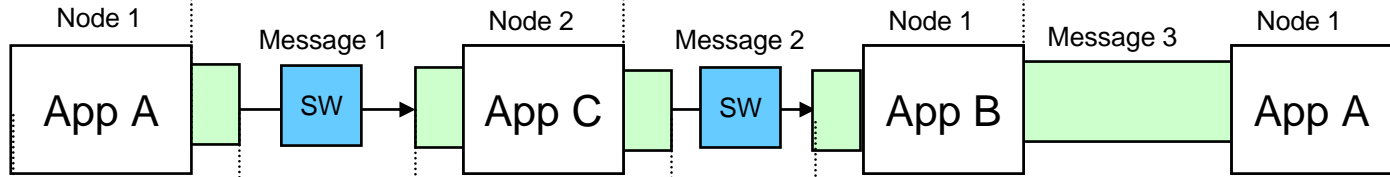
Sequence Diagram Flows can be Interpreted in Terms of Infrastructure Modeling Assemblies (IMAs)



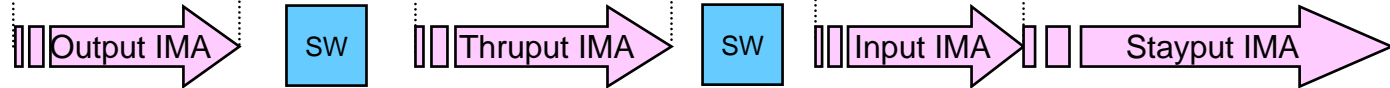
•Operations on the sequence diagram:





•Infrastructure flow between applications:



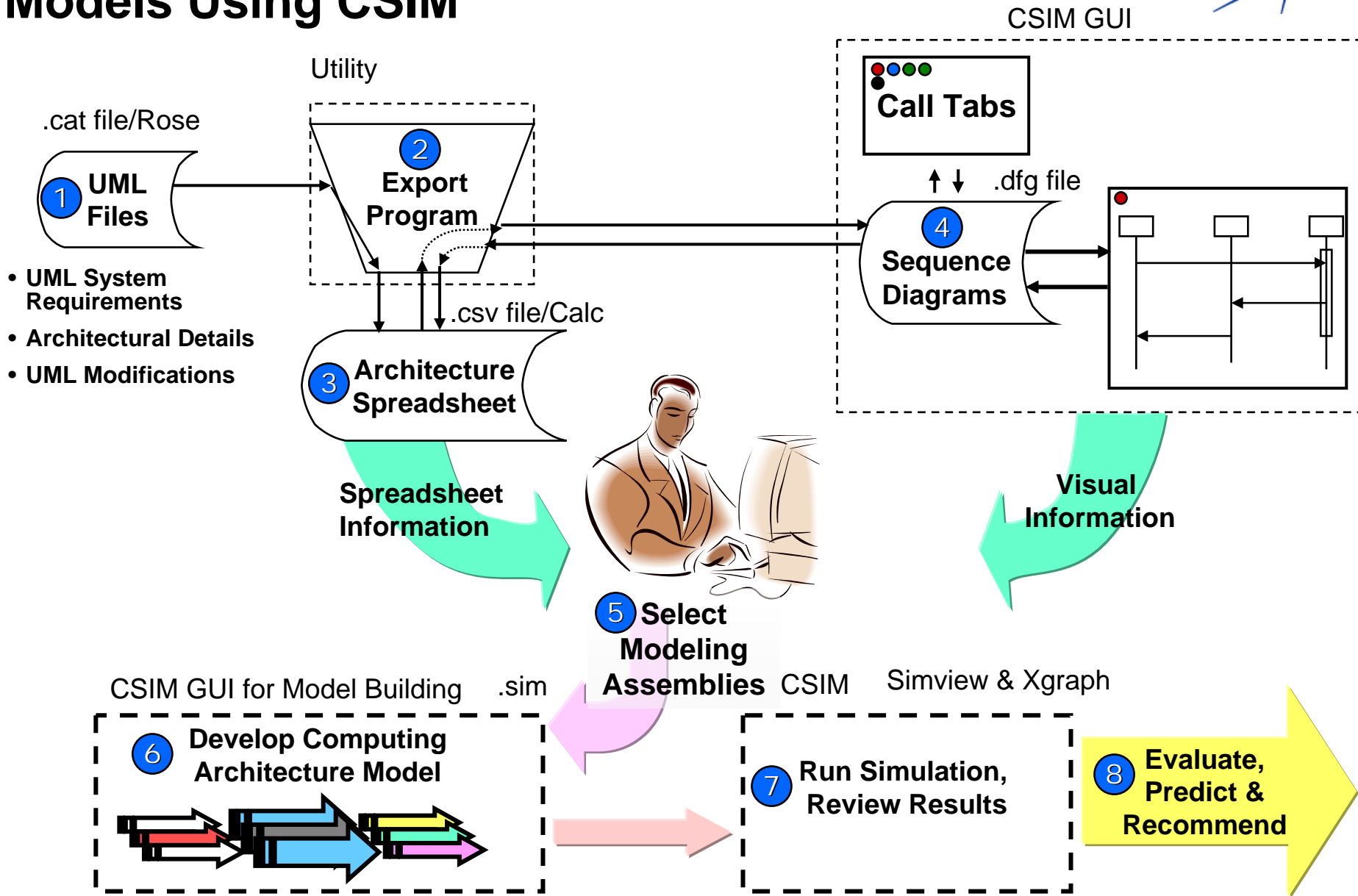
•Model flow:



 Network Switch

 Middleware &/or internet protocol

Building and Executing Performance Models Using CSIM



LOCKHEED MARTIN

