

# *Model Driven Architectures and UML Performance Modeling Capability – Design and Usage*

*Harald Pschunder and Leonard Weinberg*  
Lockheed Martin Maritime Systems &  
Sensors, Moorestown, New Jersey

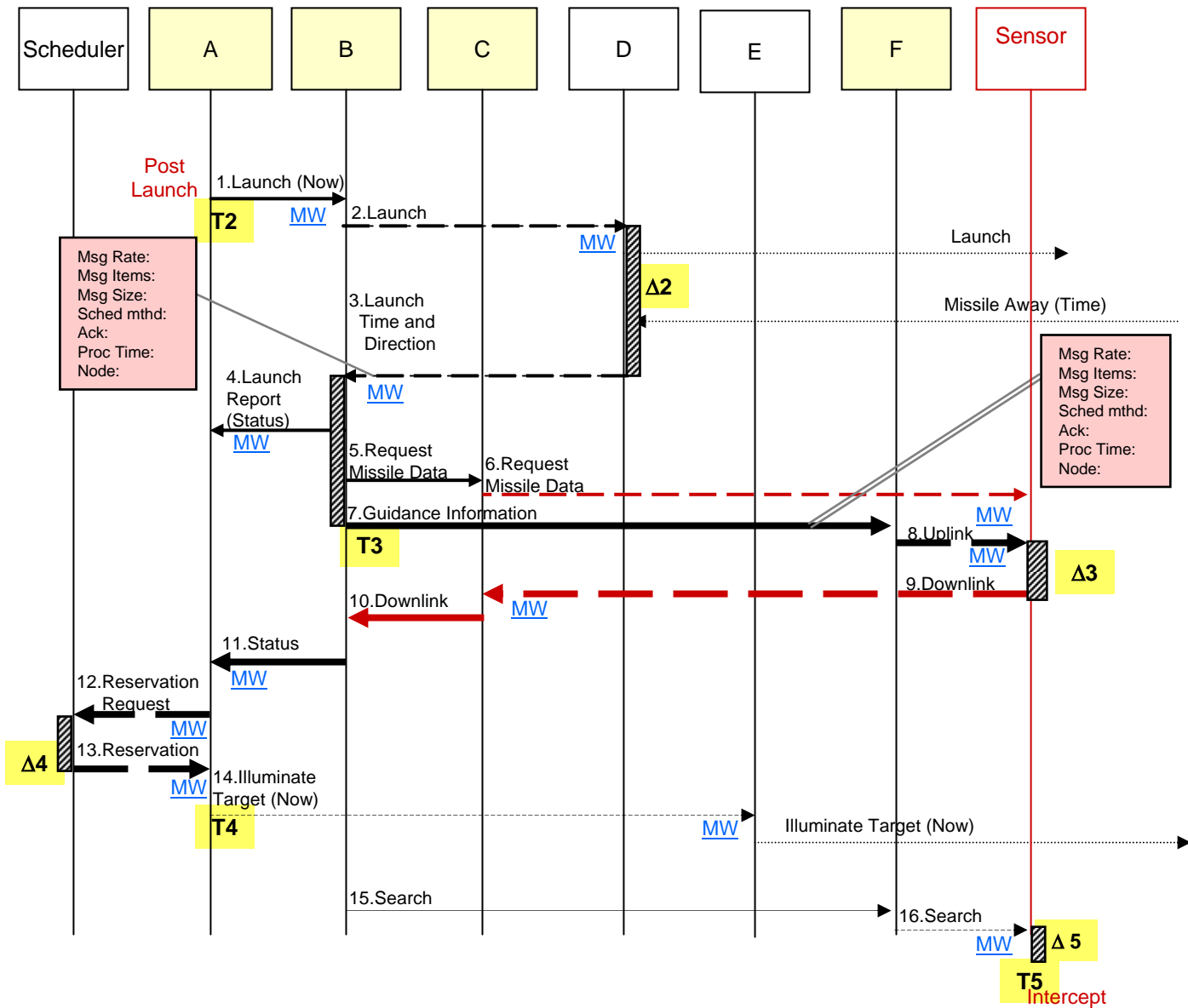
*Michael Stebnisky*  
Lockheed Martin Advanced Technology  
Laboratory, Cherry Hill, New Jersey

*Presented at: HPEC 2004*



*September 30, 2004*

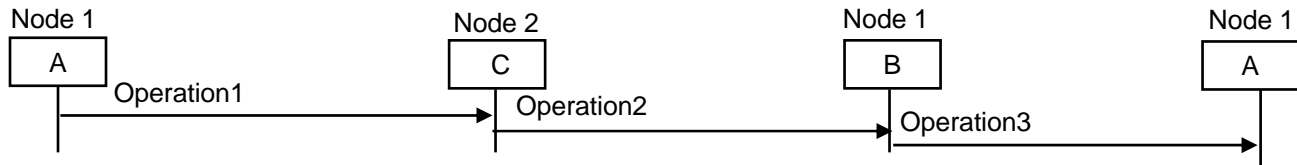
# Example: UML Sequence Diagram with Added Architecture Detail



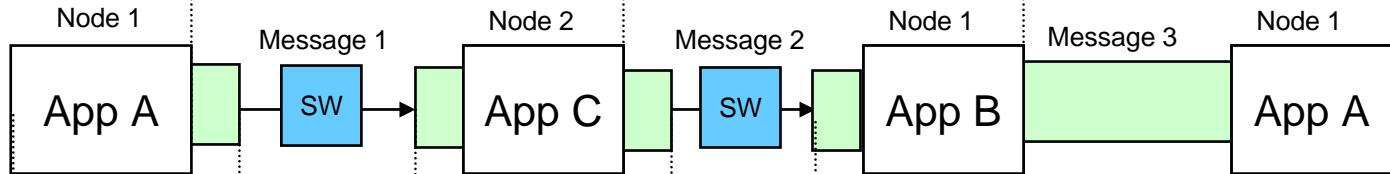
# Sequence Diagram Flows can be Interpreted in Terms of Infrastructure Modeling Assemblies (IMAs)



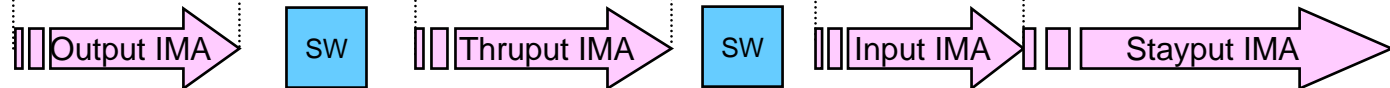
## •Operations on the sequence diagram:



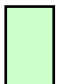
## •Infrastructure flow between applications:



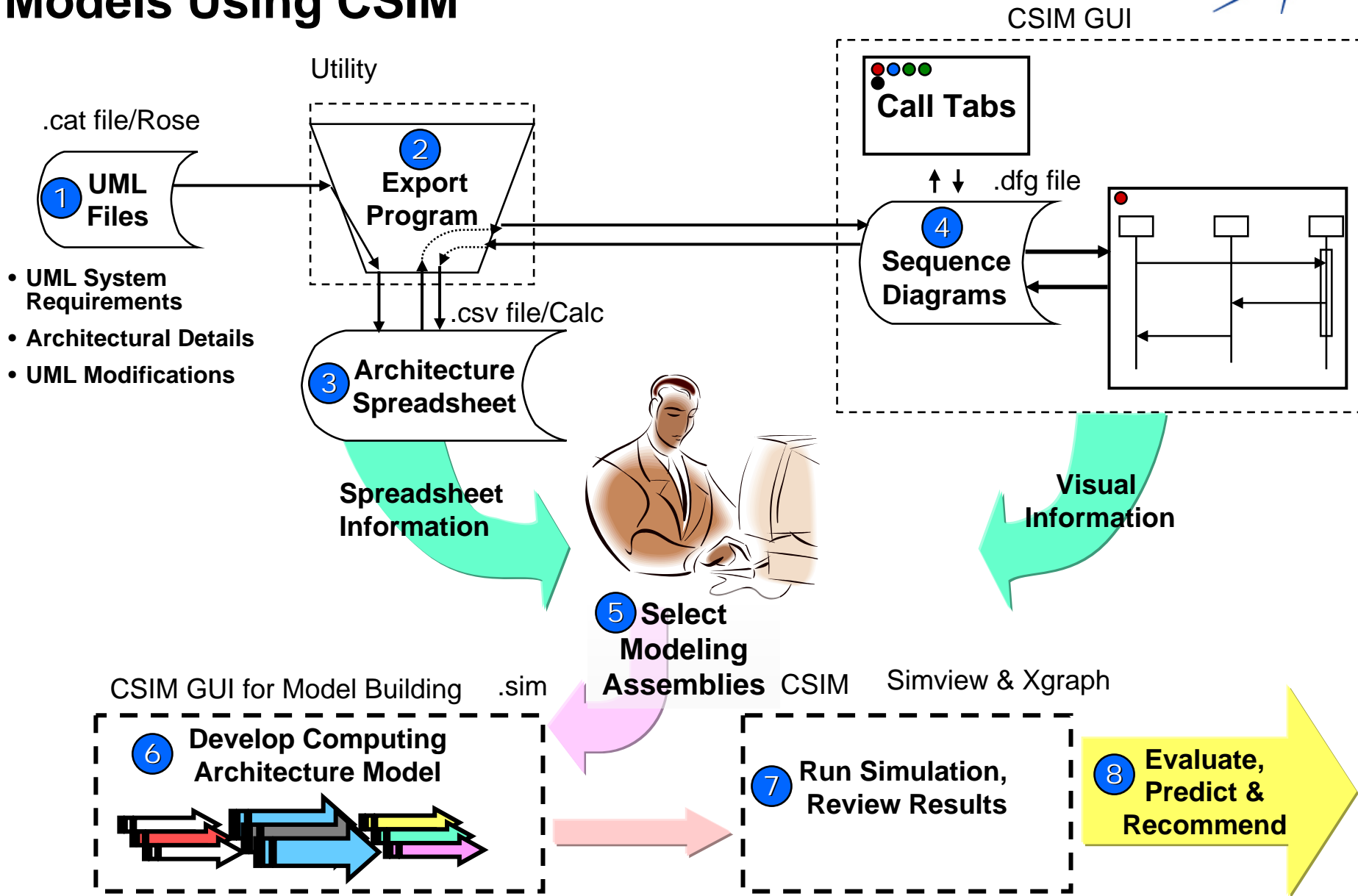
## •Model flow:



 Network Switch

 Middleware &/or internet protocol

# Building and Executing Performance Models Using CSIM



**LOCKHEED MARTIN**

